



AARNEEL
Technocrafts Pvt. Ltd.

Plot No. 16, Sector 2, Industrial Area
Pithampur 454775 (M.P) Ph.: 07292-252053
Email : info@aarneel.com, Web : www.aarneel.com

Mob : 777 299 5555



AARNEEL
Technocrafts Pvt. Ltd.

CREATING SOLUTIONS FOR SAFE WAYS

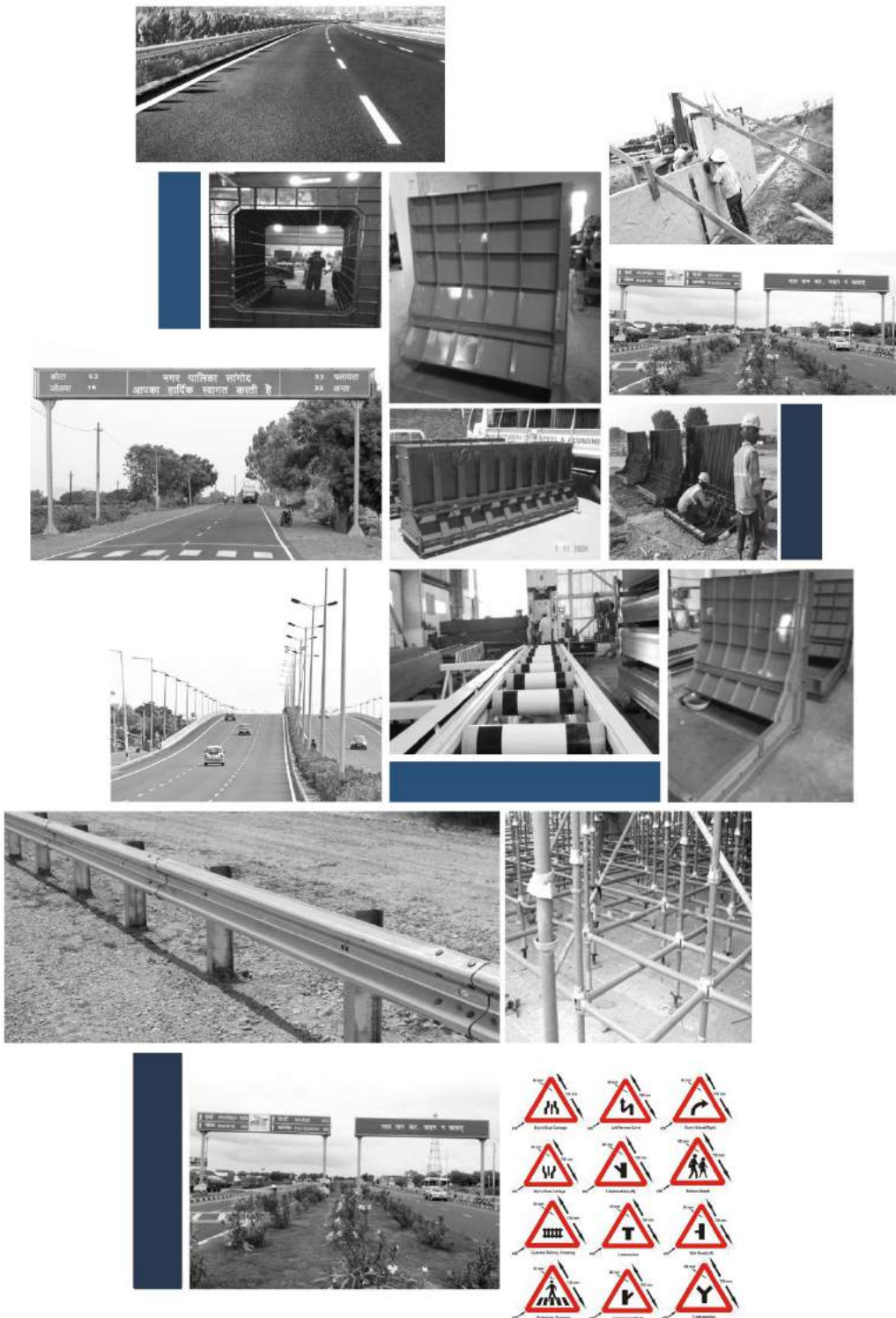


TABLE OF CONTENTS

1. Introduction

2. About Us

3. Certifications

4. Product Range
 - Safety Barriers (Metal Beam Crash Barriers)
 - Street Light Poles
 - Road Marking Paint
 - Road Signages & Retro-Reflective Signs
 - Overhead Gantry
 - Fabricated Casting Panels & Moulds
 - Flexible Crash Barriers
 - MS Scaffoldings
 - Guard Rails

5. Our 6 yrs. Growth

6. Our Customer & Associates



INTRODUCTION

Aarneel Technocrafts Pvt Ltd. was established in Dec 2012. With the objective to cater the fast growing highway industry with wide range of road safety products and giving an organised mode along with quality and delivery committed operations.

The company specializes in highway furniture manufacturing works especially Octagonal street Light Poles, Metal beam crash barrier, Retro reflective signage etc.

The all in-house facilities and self-operative project team helps in our self-evaluating approach and invaluable experience gained through successful ventures over the years has given the company the confidence to take up large project and deliver cost effective products in committed timelines with effective project management.

All products are being manufactured by acquiring quality raw material and employing the latest advanced technology.

Above all, we offer customized solutions with best in industry prices.

Incepted with an objective to excel in our domain, we are heading to greater heights progressively. We are assisted with wide distribution network owing to which our products have reached to each and every corner of the country.

ABOUT US

Aarneel Technocrafts Private Limited is evolved as the single window manufacturing company for Roads and highway furniture items with large capacity in Central India

We are manufacturing and supplying all Road safety products- Octagonal Poles, Metal beam Crash Barrier and Retro reflective Signage, Scaffoldings from our 21000 sqmtr plant in Pithampur, Madhya Pradesh since the last 07 years, Aarneel Technocraft Private Limited has stood as the "Preferred Partner in roads development" for large EPC contractors and Govt. consultants.

With about 25+ State about 30+ National projects and a total supply over of INR 4300 Million. The Company has grown steadily over the last 7 Years.

The Company's endeavor towards excellence in production quality, safety, performance,

employee satisfaction and social responsibility has enabled it to be the most trusted and sought after Engineering company among the construction leaders. It has consistently delivered projects, providing value-added engineering, construction and service skills to customers for whom the quality of execution, efficiency and reliability are critical.

Through its strong leadership and strategic execution of a very focused vision, the company has also been successful in creating an excellent track record in ensuring customer confidence.

ATPL always has the highest concern for safety and this is evidenced by securing some of the best records for Safety in its operations.





CERTIFICATION



SAFETY BARRIERS (METAL BEAM CRASH BARRIERS)



Crash Barriers are provided to ensure high resistance to impact because of its flexible beam action. In this way it minimizes the speed of vehicle and also increases the driver confidence while riding through any critical area .It also increases visibility at night or in foggy conditions.

Our range of crash barriers consists of two variants mainly:

- W beam crash barriers
- Thrie beam crash barriers

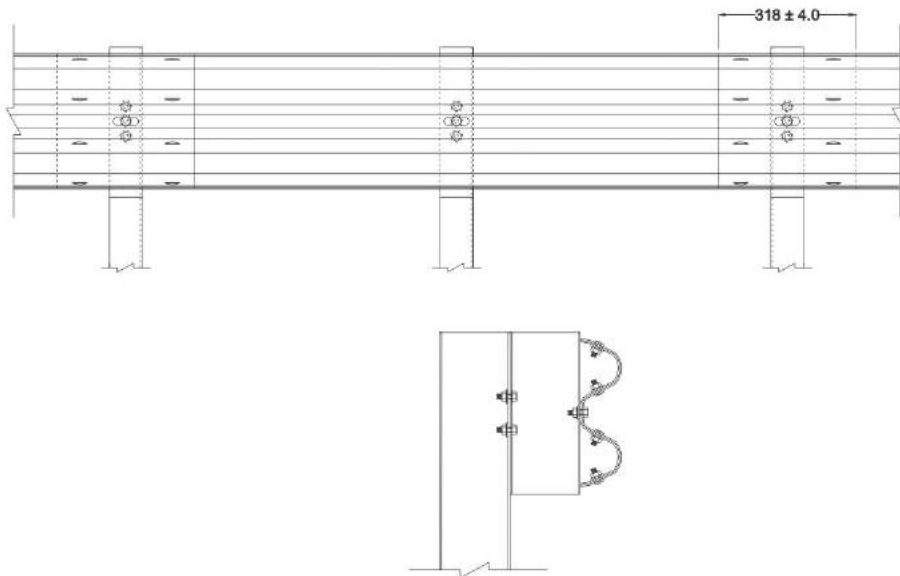
W beam with post: Metal beam crash barrier consists of W beam assembled with post and spacer in between them.

These are made up of same galvanized material. W beam satisfies IRC :84-2014.

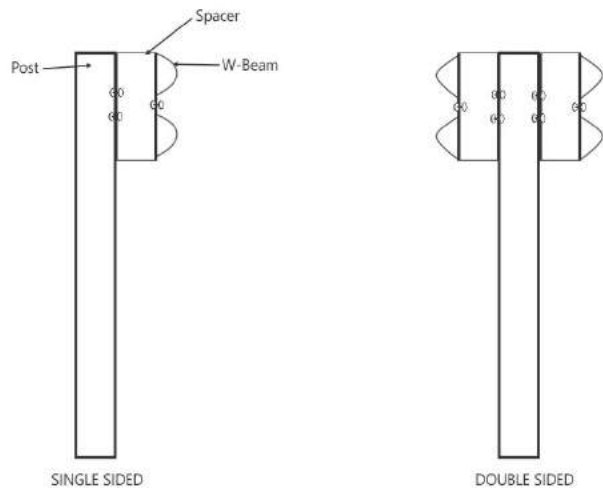
Technical Specifications:

- Raw material specifications: IS:2062 FE 410 grade steel
- Cold rolled material
- Hot dip galvanized

W-BEAM SPECIFICATIONS



W- BEAM TYPES



ABOUT PROCESS

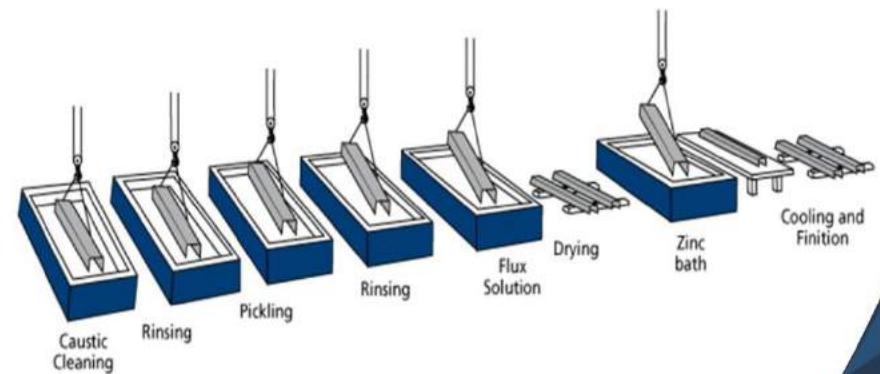
At Aarneel crash barriers are manufactured using cold forming process carried out using highly precised and qualified rolling machine, having setup of around 25m and around 5 TON production capacity per hour.

• Our total capacity for rolling machine is

around 25TON per day

• Our total capacity for galvanising is around 50TON per day

This enables us to achieve our productivity and targets on regular basis along with good quality and accuracy.



STREET LIGHT POLES

- Light poles are having great importance as they enhance visibility and illuminates roads, which ensures security and safety of people during travel.

Our range of crash barriers consists of two variants mainly:

- 10 M LIGHT POLE** • **12M LIGHT POLE**
- Light pole assembly: The light pole assembly consists of arm bracket mounted on bottom pole tightened with the help of bolts .

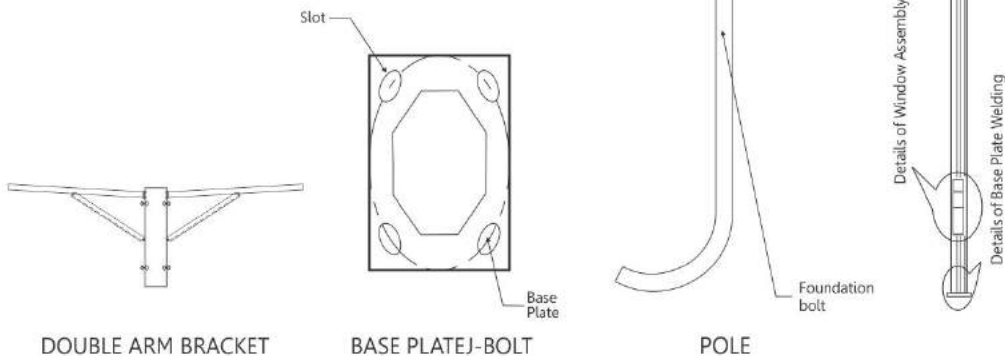
Poles are erected with the help of anchor bolts(J bolts).

TECHNICAL SPECIFICATIONS

- Raw material specifications: IS:2062 E 350C grade steel
- Structures is suitable for wind speed as per as IS 875
- Pole cutting is done on plasma arc cutting machine.
- Pole closing is done with SAW welding process.
- Entire pole is hot dip galvanized both internally and externally for better protection.

ABOUT PROCESS

At Aarneel, we produce poles which are long lasting with respect to weather conditions and aesthetics. Our process consists of plasma cutting, bending process, SAW closing process and galvanisation in last. While production of poles at such a high rate, we assure proper quality and other standards to be maintained along with it.



ROAD MARKING PAINT

It is hot applied thermosetting reflective road marking which can be applied by hand operated/automatic machines only. Thermo plastic paints are more durable having 6 to 7 times longer life than cold applied paints.

METHOD OF APPLICATION

On the bituminous surface this should be assured that surface is free from dust, oil, grease, cracks. On concrete roads a coat of primer should be applied before applying thermoplastic paints.

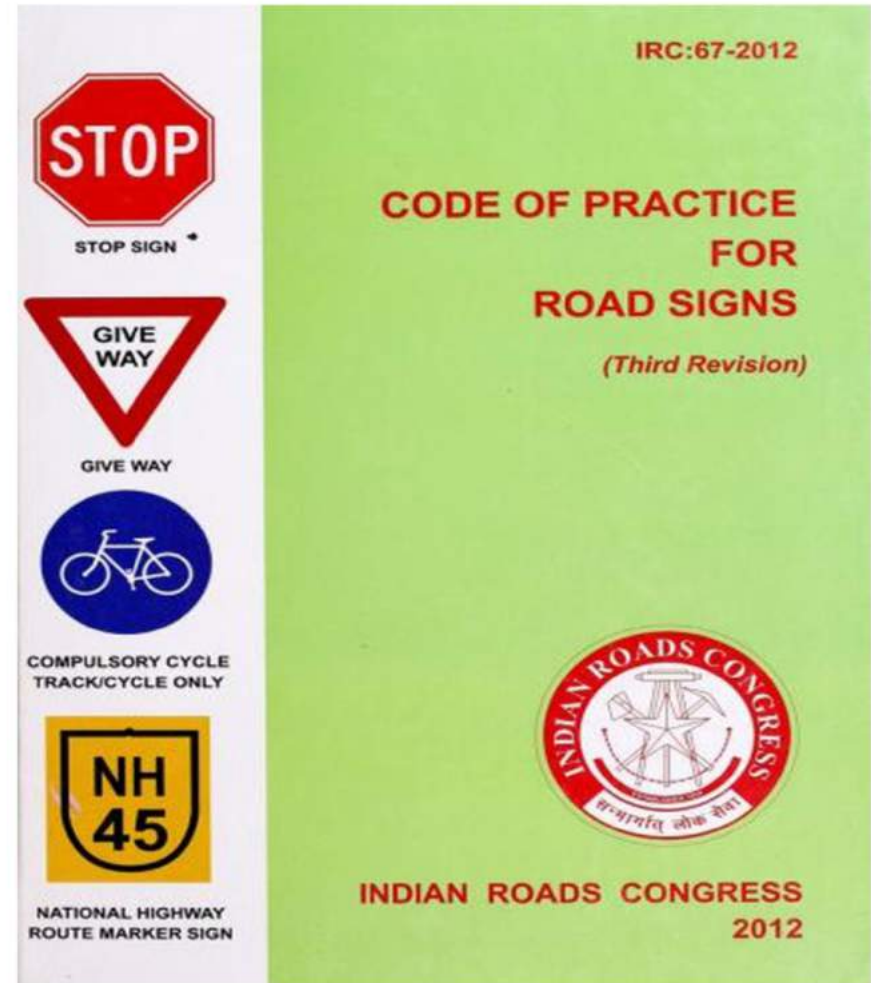
CATEGORIES: The road marking paints are available in white and yellow colors.

OUR PRODUCTION CAPACITY: At AARNEEL we produce around 1800 Metric ton per month.

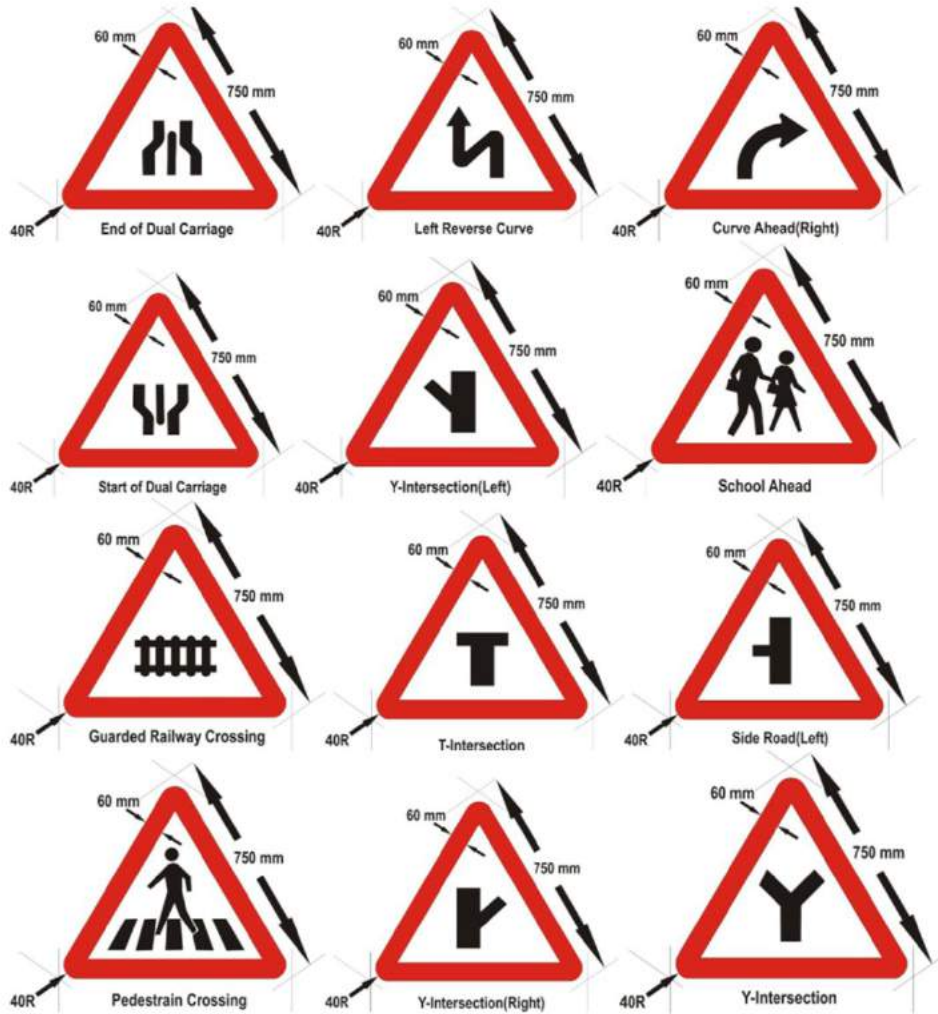
ROAD MARKING PAINT



ROAD SIGNAGE



ROAD SIGNAGE



OVERHEAD GANTRY



MOULDS - RE WALL PANEL

RE Panel walls are a composite system of a face panel - generally concrete and a steel reinforcement element - either in the form of a steel strip or welded mesh, that is positively connected one to the other such that a stable

unified gravity soil mass may be formed. The facing panel is generally a precast concrete unit that provides local soil stability and a "face" for compaction of the retained soil.



CULVERT MOULD



FRICTION SLAB MOULD



FLEXIBLE CRASH BARRIERS



MS SCAFFOLDING

Scaffolding, also called scaffold or staging, is a temporary structure used to support a work crew and materials to aid in the construction, maintenance and repair of buildings, bridges and all other man made structures. Scaffolds are widely used on site to get access to heights and areas that would be otherwise hard to get

to. Unsafe scaffolding has the potential to result in death or serious injury. Scaffolding is also used in adapted forms for formwork and shoring, grandstand seating, concert stages, access/viewing towers, exhibition stands, ski ramps, half pipes and art projects.



GUARD RAILS

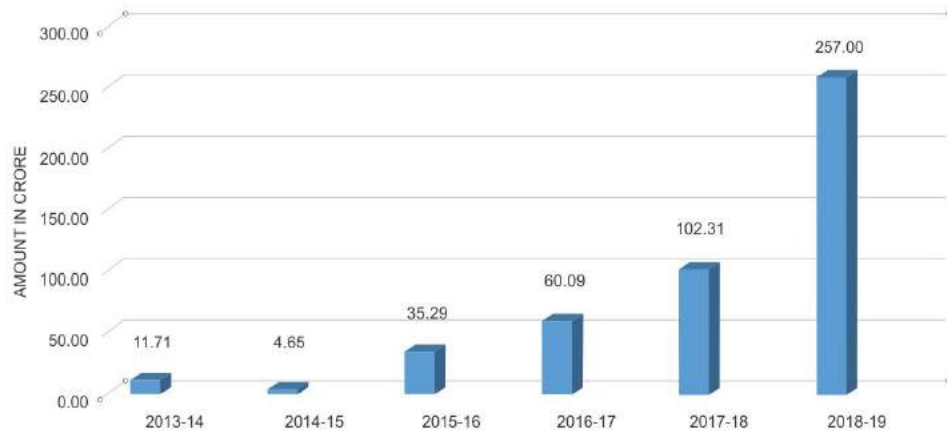
They are a boundary feature and may be a means to prevent or deter access to dangerous or off-limits areas while allowing light and visibility in a greater way than a fence. Common shapes are flat, rounded edge, and tubular in horizontal railings.

In traffic engineering, highway guardrail may prevent an errant vehicle from hitting roadside

obstacles, running off the road and going down a steep embankment, or veering off the roadway into oncoming traffic (commonly referred to as a median barrier). Roadside obstacles are typically referred to as fixed objects. A secondary objective is keeping the vehicle upright while deflected along the guardrail.

LAST 6 YEARS GROWTH

GROWTH RATE



OUR CUSTOMER & ASSOCIATES

